

LIGHTWEIGHT CONSTRUCTION IN EXCELLENT HANDS



	VLIGHT BASICS
4	Panel Lamination
6	Furniture Parts and Furniture Production
8	Wrapped Profiles and Mouldings
9	Polyurethane (PU)
	V.I.T. (Vöhringer Innovation Technology)
10	VUNDER TECH
11	VFLEX
12	V3D COMPOSITE
13	VSTRONG
14	Climate neutral production

INNOVATION HAS A LONG TRADITION WITH US

Intelligent wood processing: this has been the linchpin at Vöhringer for over 100 years. Based on this tradition - and a keen sense of innovation - we have become what our customers value so highly today: To the specialist in lightweight construction for the high-quality outfitting of motor homes and caravans, but also for the furniture industry, trade fair construction, yacht design and much more. When it comes to the production and coating of profiles and furniture parts or the use of polyurethane (PU) as a waterproof lightweight construction material, Vöhringer is the leading system supplier.

Our lightweight solutions not only reduce the weight of products. They also create unique creative possibilities, open up new opportunities for individual lifestyles, and - for example, through considerable savings in raw and other materials - provide a significant boost to sustainability.

Get to know our products and ideas on the following pages - the VLIGHT Basics as well as the unique V.I.T. Vöhringer Innovation Technology - and find your customized Vöhringer lightweight solution.



JÜRGEN
VÖHRINGER



THOMAS
VÖHRINGER



YANNICK
VÖHRINGER



PANELS CAN BE SO FLEXIBLE

It all started with the first paper-coated plywood panels, which enabled the caravan industry to advance into unimagined lightweight dimensions. Today, with around 50 years of experience and many innovative ideas, Vöhringer is your top address in the field of surface lamination.

Regardless of whether industrial dimensions or individual special solutions are required: Our development department makes the most demanding requests marketable, setting new benchmarks time and time again.

We laminate any suitable material - from plywood, MDF, HDF and particleboard to innovative sandwich and plastic panels. Flexibility is the trump card when it comes to surfaces: paper, foil or laminates (from super-matt to high-gloss) - the choice is yours.

With eight state-of-the-art machines and experienced employees, we are perfectly equipped to meet your needs.

**STATE-OF-THE-ART PROCESSING TECHNOLOGIES
AND COMPETENT EMPLOYEES GUARANTEE
EXCELLENT CUSTOM WORK.**



BASE MATERIAL

- // Plywood
- // MDF
- // HDF
- // Particleboard
- // Sandwich panels
- // Plastic boards

PANEL SIZES

- // Width: up to 1,300 mm
- // Length: up to 3,000 mm
- // Thickness: up to 50 mm

SURFACES

- // Paper
- // Foil
- // Laminate
- // From super matt
to high gloss





VLIGHT BASIC / Furniture parts and furniture production

WE LOVE LIGHTWEIGHT CONSTRUCTION IN EVERY FORM

Classic furniture construction combined with innovative lightweight design: This is one of our specialties - and an ideal option for the caravan and motorhome industry, where saving weight counts just as much as a high-quality appearance.

We manufacture two- or three-dimensional furniture fronts, free-form elements such as office desks, postforming elements and anything else that will delight your customers - just-in-time and in unsurpassed Vöhringer quality.

MOULDED PARTS

- // 27 vacuum presses
- // CNC machinery at the most modern level
- // More than 300 moulds
- // Dispersion adhesives
- // PUR hot melt
- // Press size up to 3,230 x 1,400 mm

EDGE

- // Wrapping
- // Postforming
- // Narrow surface edging thin and thick edges

COMPONENT HEIGHT

- // Components bent on one side: Stitch height up to approx. 360 mm
- // Two-sided straight components:
 - Postforming depending on radius up to 24 mm material thickness
 - Edging up to 60 mm material thickness
 - Pure CNC processing up to approx. 500 mm height (depending on tool)
- // Special edging up to 128 mm edge height



YOUR CONCEPT DETERMINES FORM AND OPTICS - WE TAKE CARE OF THE OPTIMAL REALIZATION.

DOOR BARS AND MOULDED PARTS

Do you need curved door bars and moulded parts to implement your product idea in the best possible way? Then you have come to the right place at Vöhringer. Our production departments work hand in hand to manufacture furniture parts for you according to a wide range of criteria - regardless of whether the focus is on a particularly favorable price or especially low weight.

You decide individually what degree of production the delivered parts should have: We supply finished furniture parts - e.g. doors, panels or fronts -, complete kits or also prefabricated products such as door bars and profiles.

Since we manufacture many primary materials in-house, we are extraordinarily flexible. Together with you, we develop a custom solution. The manufacture of PU furniture is one of Vöhringer's particular strengths - with a range of services that you will have to search long and hard for elsewhere. Tell us what you want and we will get to work!



WE SIMPLY GO ALL OUT FOR YOU

When the production and wrapping of profiles is required, you can count on genuine Vöhringer all-inclusive service: From the production of profile cutters to CNC machining, everything comes from one competent source.

Widths of up to 640 mm? No problem! And the range of materials is comprehensive, as it is the case everywhere at Vöhringer: profiles made of Abachi, MDF, PU, PVC or aluminium are coated with the decor of your choice. Moreover, even complicated aluminium profiles and furniture flaps with profiles are perfectly handled by our professionals.



PU - INGENIOUS WHAT IT CAN DO



**WE AT VÖHRINGER HAVE
PERFECTED THE WORK WITH
POLYURETHANE.**

Vöhringer polyurethane products are based on the most modern PU technologies. And you should make use of this advantage. Because due to its extreme versatility, PU is suitable both for cost-effective production and for individual moulds - not to mention other convincing plus points such as water resistance, mould resistance or long durability.

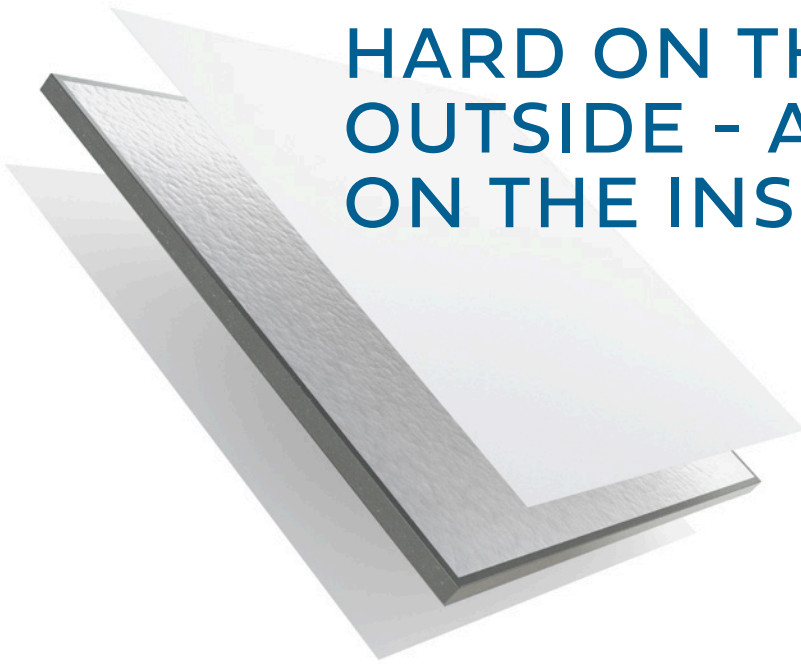
Foam weights vary depending on the intended use. You tell us what you need and we will implement it.

In the area of rigid foam, you have the choice between strips and free-form. Would you like inserts or special film covers? We will do it! Semi-rigid foams and in-mould-coatings are also part of our product range. If required, we can also produce furniture parts completely out of PU.

Robots ensure consistent quality in PU production during the injection process. The mixing process can be directly documented and controlled so that you can rely on consistent properties over the long term.



HARD ON THE OUTSIDE - AND LIGHT ON THE INSIDE



OUR VUNDER TECH CONCEPT HAS WON AWARDS.



Extremely light, reliably water-resistant, enormously robust and extraordinarily versatile as far as possible shapes are concerned: these are the impressive properties of VUNDER TECH, a solution that does not require any tools or templates at all.

Characteristic for VUNDER TECH is a special sandwich construction, in which a particularly low-weight core material (for example EPS or

PET) is used - in combination with robust cover layers. Core material and laminate are cast together using polyurethane (PU). The PU provides additional stability and an attractive appearance at the edge.

All materials are joined seamlessly and waterproof. No wonder, then, that VUNDER TECH was already able to secure the coveted INTERZUM Award in 2017 - as „Best of the Best“ in the category „Intelligent Material & Design“.

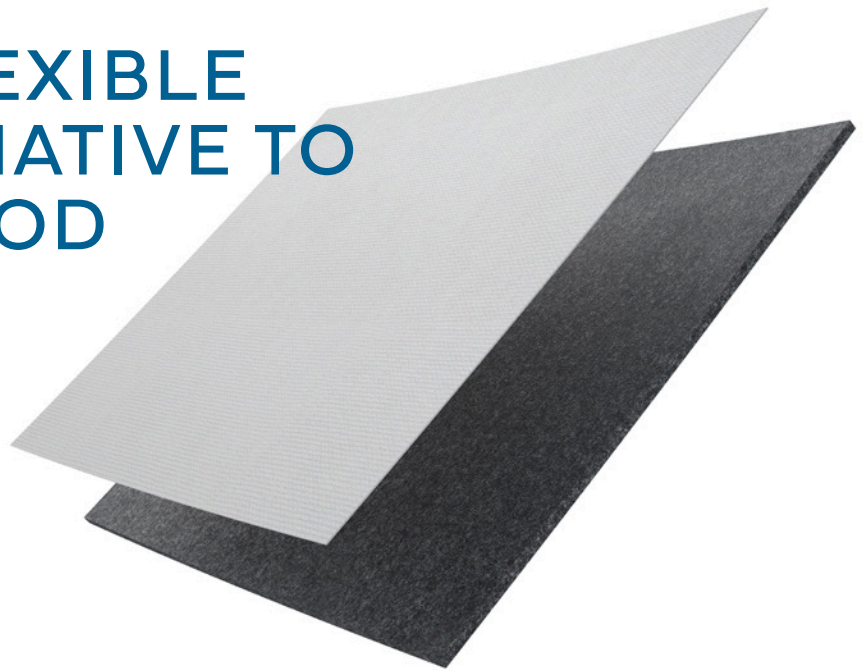


- // Thickness: from 5 mm
- // Maximum size: 2,100 x 1,300 mm
- // Core material: various materials
- // Cover material: decors from 0.8 mm thickness
- // Edge colour: black and grey
- // Screw pull-out value: 820N from the grouting material
- // Small batch sizes possible
- // Tooling costs: none (except for curved parts)

STURDY DOES NOT HAVE TO BE HEAVIER: IT'S THE COMBINATION OF MATERIALS THAT MAKES IT.

THE FLEXIBLE ALTERNATIVE TO PLYWOOD

MODERN AND UNUSUAL
SURFACES ARE CREATED
WITH VFLEX.

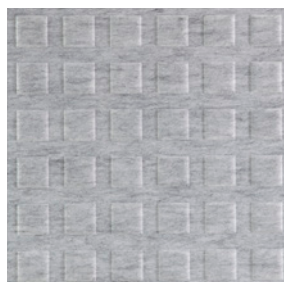


Have you been dependent on thin plywood panels for interior finishing? Then it's time to think about our wood-free alternative VFLEX! Special polyester fibres form the base material of this clever solution, so there is no longer any risk of rotting.

Other strengths: VFLEX is breathable, can absorb and release moisture and also has a sound-absorbing effect. You can use the panels both un laminated and attractively coated with foils or fabrics.



- // Base material: Various inorganic materials
- // Weight: from 750 g/m²
- // Areas of application: e.g. wall covering, ceiling covering, lining of storage spaces, rear garages
- // Lamination: fabrics and foils
(must be individually tested for compatibility)
- // Dimensions: flexible
- // Packing unit: depending on the materials used, as sheet goods



FITS EVERYWHERE AND WITHSTANDS A LOT

**VSTRONG PANELS
HAVE A LOW WEIGHT
PER UNIT AREA,
OFFER HIGH FLEXURAL
STRENGTH AND ARE
WATER-RESISTANT.**

VSTRONG stands for lightweight panels that are mainly used as floor elements in caravans and motorhomes. The name says it all. Tests have shown that VSTRONG panels are capable of bearing loads of several tons!

To influence the panel weight, it is possible to use different core materials (PET/honeycomb) in different densities. Top layers consisting of a glass fibre/polypropylene scrim provide enormous stability.

Thanks to their inorganic materials and closed cell core, VSTRONG panels are water-resistant and also have good insulation values.

// Core: e.g. closed-cell PET foam, PU foam, honeycomb etc.

// Surface: face sheets made of PP with a high proportion of directional glass fibres.

// Maximum size: 8,000 x 2,450 mm

// High screw pull-out values
(depending on the core density and thickness of the cover layer)

// Edging possible

// Lamination possible

LIGHTWEIGHT CONSTRUCTION WITH A WONDERFUL FEEL

**SOUND-ABSORBING,
BREATHABLE, LIGHT-
WEIGHT, PLEASANT
TO THE TOUCH.**



V3D COMPOSITE lightweight construction elements reduce weight, are breathable, have a sound-absorbing effect and at the same time inspire with a surface that is particularly pleasant to the touch. Typical areas of application are side wall covering, headlining and ceiling covering, interior cupboard covers, B-pillar covering and rear garage covering. You as the customer determine the design, shape and integration - we supply components made to measure, even in small quantities.

- // Base material: various - polyester, natural fibre, PET, etc.
- // Surface: fabrics and foils (must be tested individually for compatibility with the desired shape).
- // Moisture is absorbed and released
- // Batch sizes: even small and medium batch sizes can be realised cost-effectively
- // Only insignificant material weakening even in areas of strong material deformation

**FOR THE FEEL-GOOD
ATMOSPHERE IN THE INTERIOR:
FABRIC-COVERED TRIM PARTS.**

WE TAKE OUR RESPONSIBILITY SERIOUSLY



At Vöhringer we are always one step ahead when it comes to environmental protection and sustainability. For example, our company has long been working consistently to reduce its ecological footprint - through measures to reduce CO₂ and careful use of natural resources. Since 2013, we have had a certified environmental management system (DIN EN ISO 14001). In 2014, we added a certified energy management system (DIN EN ISO 50001). And since 2021, our production has been completely climate-neutral.



To reduce our company's emissions, we do the following, among other things:

- // We use green electricity and self-generated solar energy (6 PV systems, 2 of which are completely for our own consumption).
- // Wood residues from production are burned in our wood chip plant - this is how we heat the production and administration buildings at both locations.
- // We conserve resources, e.g. by using largely paperless offices.
- // We regularly conduct environmental protection training for our employees on topics such as energy and water conservation, waste separation and waste reduction.
- // A large part of our production halls and administrative offices are equipped with LED lighting.
- // To compensate for remaining emissions (e.g. due to business trips), we support climate protection projects worldwide. As a wood-processing company, our focus is on reforestation and the protection of forests. You can find out more about the projects at ecology.voehringer.com

DO YOU LIKE
WHAT YOU SEE?
CONTACT US!

// PERMANENT INNOVATION IN
LIGHTWEIGHT CONSTRUCTION

// FLEXIBLE SOLUTIONS FOR
EVERY APPLICATION

// LARGE VARIETY OF MATERIALS

// QUALITY PROCESSING
MADE IN GERMANY

// ADVICE FROM EXPERIENCED
PROFESSIONALS

Vöhringer 

Vöhringer GmbH & Co. KG
In Aufzügen 11
72818 Trochtelfingen
Germany

+49 7124 92980
info@voehringer.com

More info:
voehringer.com

